



# AROMA SENSE

DIFFUSER OIL & OIL DIFFUSERS

Congratulations on your purchase of the Aroma Sense Pro for Car essential oil diffuser. Please read all the instructions carefully before using your diffuser.

## **IMPORTANT WARNINGS AND SAFETY INFORMATION. READ COMPLETELY BEFORE USING**

**Oils are flammable. Do not expose oils to flame.**

**Do not ingest oil or use for aromatherapy. Handle oils carefully. Do not get in eyes or prolonged exposure to skin.**

**Do not disassemble the unit. There are no user serviceable parts. Unit should be disposed of when unit reaches the end of its useful life.**

**Do not expose to or use near water.**

**Do not use if cord has been frayed or damaged. Use only cords provided with the unit.**

**Do not overload power supplies or outlets.**

**Do not move the unit when containing oil or operating.**

**Do not use fragrant oils if allergic to essential oils, perfumes or other scents or suffer from asthmatic conditions.**

**Diffuser oils are highly concentrated solutions. Set your diffuser to the lowest setting and move up from there. Your sense of smell becomes accustomed to a scent after time. Before adjusting scent intensity upward, leave the room for 5-10 minutes and return. Setting your levels too high for the room size could cause headaches. In such a case, seek fresh air and lower your settings.**

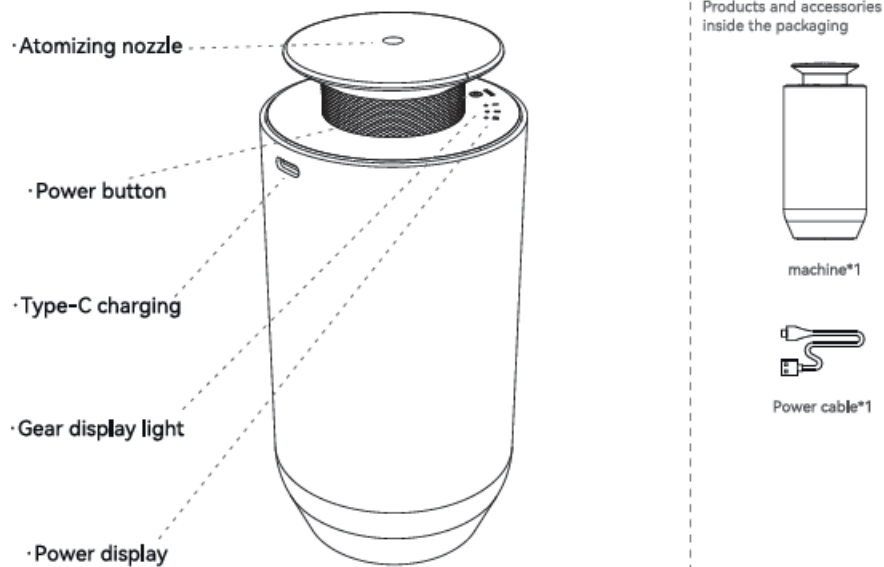
**Oils may damage finished wood and plastic surfaces.**

**Clean your diffuser each time you replace the oil or at least every 30 days. Follow the cleaning instructions below.**

**Use only approved oils.**

## Pro for Car Diffuser Instructions:

### 01 Introduction to each component



#### Operating Instructions

There are three modes:

I – Low: working 15s, stops 200s.

II- Medium: working 15s, stops 100s.

III- High: working 15s, stops 60s.

To choose between modes, press the mode button. The light will indicate the current operating mode.

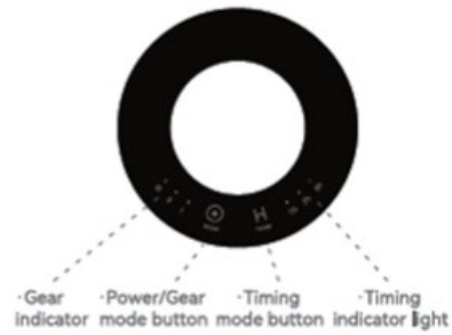
There are three times modes, 1 hour, 2-hour, 3-hour. To toggle between modes, press the H timer button.

To turn off press and hold the mode button until the lights turn off.

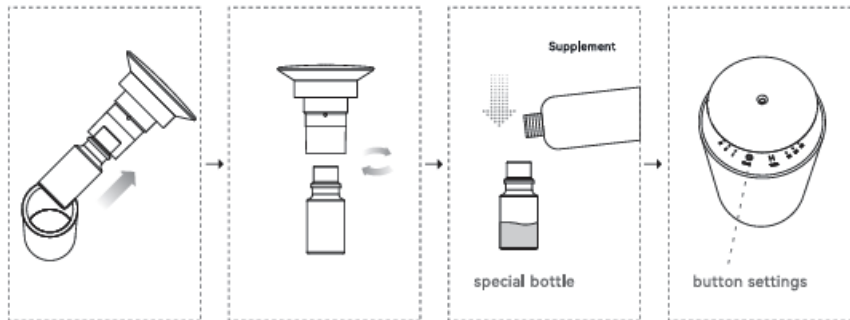
To turn on, press and hold the mode button until the lights turn on.

To charge: plug in the USB charging cable into the unit and a power source. The mode lights will flash sequentially until fully charged. Once fully charged, all three mode lights will be lit.

### Control Panel Operating Instructions



## 03 Instructions



**Rotate out the atomizer head**

**Rotate to take out the special bottle**

**Add essential oils to dedicated bottles**

**Put back the atomizing head and start setting**

#### Instructions for the use of essential oils

△1. Please stop the device for 2 minutes before adding essential oils again, and unscrew the essential oil bottle after the essential oils inside the mold head return.

△2. It is recommended to control the amount of essential oil added within 45 days each time to avoid deterioration of essential oil due to oxidation.

## Attention

---

- Do not use overloaded power sockets, damaged power cables or adapters, or your safety may be endangered. To avoid fire hazards, please replace them in time if found.
- If you are not a technician, please do not attempt to modify, disassemble, or repair the device to avoid damage to the device.
- If the device is abnormal, please check whether it is operating according to the normal use requirements, or check according to the troubleshooting, if you can't solve it, please contact the seller in time.
- Do not invert or tilt the device when in use.
- If the equipment needs to be transported to other sites, please maintain and clean the equipment first (see Equipment Maintenance for details) before packaging and transporting to avoid damage to the equipment from penetration of essential oils.
- Please maintain and clean the equipment regularly to ensure that the equipment is in the best working condition.
- Do not disassemble the machine to avoid affecting the use effect.

### **Cleaning the Diffuser:**

Every time that you change/add oil or every month, empty your diffuser of all oil, fill you bottle about 1/3 with 95% isopropyl rubbing alcohol and run your diffuser for 15 minutes continuously. After cleaning, empty and dispose of the used rubbing alcohol and refill your unit as normal.